



# Philatélux

STAMPS ISSUES • 18/19.09.2025 • NUMBER 3



[postphilately.lu](http://postphilately.lu)



# EDITORIAL



A change of monarch in the world's only Grand Duchy is an important historical event, so POST Philately will naturally be offering special products to mark the occasion. As part of a special issue on 3 October 2025, the day of the change of reign, we will issue a block, a commemorative stamp and a special cancellation mark.

Luxembourg is an open and multicultural country. With that in mind, POST Philately has always been keen to initiate, promote and implement cooperation with various international partners. In this edition you will find three examples: the "Dove of Peace" project, the crypto stamp and the 2025 SEPAC motif.

I hope you will enjoy discovering this new edition of our brochure!

Claude Balthasar  
*Chef de service Patrimoine & POST Philately*

Subscribe to the  
POST Philately newsletters



# CONTENTS



4

**Crypto stamp**  
Heroes of mythology



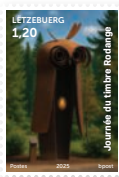
6

**Special stamp**  
Dove of Peace



8

**Special stamp**  
SEPAC – Architecture:  
*Hôtel des Postes*



10

**Special stamp**  
Stamp Day 2025



12

**Philatelic  
exhibition**

14

**Products &  
information**

16

**On the road with  
POST Philately**

18

**Stamp presentations**

21

**Behind the scenes**

# Legends meet crypto stamps

## Heroes of mythology

In 2025, POST Philately is already issuing its third crypto stamp. As in previous years, a related motif will appear at the same time in other countries with which POST Philately cooperates in the crypto stamp area. In 2024 these partners were *Österreichische Post* (Austria), *PostNL* (Netherlands) and *bpost* (Belgium), which will this year be joined by *CTT – Correios de Portugal* (Portugal).

This year's theme is Greek mythology. Accordingly, each of the six motifs of the five partners (Austria will issue two motifs and all other countries one each) will represent a Greek deity. The Luxembourg crypto stamp shows Artemis.

As usual, there will be a digital twin of the physical crypto stamp in five colours, each of them in a different print run. You can therefore collect the paper version of this issue and use it to send your mail, or you can scan the QR code to save the digital version as an NFT on a blockchain for trading.

This year the six motifs were once again designed by Austrian graphic artist Lisa Filzi.



Artemis, goddess of the hunt and nature, adorns the Luxembourg crypto stamp and honours the richness and diversity of Luxembourg's landscapes and forests.

In Greek mythology Artemis was also the protector of animals, virgins and women in childbirth. As the daughter of Zeus and Leto, and twin sister of Apollo, she embodies independence and female strength. Whilst in earlier representations she was primarily associated with the hunt and protection, over time she also became connected with the moon.

Zeus and Hera (Austria), Hermes (Netherlands), Athena (Belgium) and Poseidon (Portugal) complete the crypto family. These stamps can be ordered from POST Philately by phone or e-mail while supplies last.

[cryptostamp.lu](https://cryptostamp.lu)





The new crypto stamp will be issued on 18 September 2025.  
You can get the first day cancellation mark on the day of issue at  
the Philatelic Counter at the Espace POST Luxembourg-Gare.



**Price of the stamp:**

€10.30

**Layout:**

Lisa Filzi (AT)

**Printing:**

Colour offset and screen print on Invercote Creato matt 240 g/m2 paper,  
PET film for NFC chip, silver metallic, film and varnish, NFC chip 384 bytes,  
AES-SUN NDEF security by Variuscard GmbH, Vienna (AT)

**Format of the stamp:**

43 x 53 mm

**Format of the block:**

53.98 x 85.6 x 0.79 mm

**Print run:**

15,000 stamps



**Red 150 pcs**



**Yellow 1,005 pcs**



**Blue 1,995 pcs**



**Green 4,005 pcs**



**Black 7,845 pcs**

# United for Peace – One Stitch at a Time

We all wish to live in peace and yet we are often surrounded by conflict – in ourselves and our communities, or at the global level. An international initiative is now sending a specific signal with the embroidered “Dove of Peace” stamp, to strengthen awareness of peace and solidarity.

POST Philately is one of the ten international postal administrations (Aland, Armenia, Austria, Barbados, Cyprus, Faroe Islands, Greenland, Liechtenstein, Luxembourg, Switzerland) to have created an extraordinary stamp together with the United Nations (UN), Universal Postal Union (UPU) and Austrian embroidery manufacturer Hämmerle & Vogel GmbH & Co KG. This stamp is not made of paper but has been artistically created from thread.

The presentation of a dove – as the universal symbol of peace, hope and understanding – was chosen in order to send a clear message across national borders.

As well as being a limited collector’s item, the stamp has a symbolic purpose: It serves as a reminder that peace is not self-evident, and that it requires constant effort and personal commitment – mirroring the patience and care that has gone into each embroidered stamp.

The “Dove of Peace” stamp is intended to send a simple but powerful message – peace begins with the small gestures made by each of us. And with its motif and message, the stamp binds people together across national borders.



## Current price of the stamp:

€5.50

## Layout:

Iris Hämmerle (AT)

## Manufacturing:

Hämmerle & Vogel GmbH & Co KG (AT)

## Format of the stamp:

54 x 43 mm

## Print run:

30,000 stamps



Each stamp naturally meets the relevant national requirements and can therefore be used to send mail. To strengthen the impact of the project, most of the participating postal administrations\* will issue their version of the stamp on the same day – two days before the UN's World Peace Day, which takes place on 21 September each year.



\* Differing issue days: Switzerland (4 September 2025), Greenland (12 September 2025), Barbados (issue date not known yet)

# A reflection of Luxembourg's architectural history

Architecture is the theme of this year's SEPAC edition, with its focus on the architectural history of member countries.

POST Philately has chosen the *Hôtel des Postes* in Luxembourg City as its motif. This building served as the head office of POST Luxembourg for over a hundred years – until 2017 – and is currently being converted into a hotel.

After the Prussian garrison left the city, the post office initially moved into their former barracks at *beim Piquet* – at the top of what is today *Rue Aldringen* – in 1869. However, the building soon proved inadequate for its purpose.

A new post office – today's *Hôtel des Postes* – was therefore erected between 1908 and 1910, based on the plans of architect Sosthène Weis. Located on a newly chosen site on *Rue Aldringen*, the

building soon became one of the city's landmarks and housed Luxembourg's main post office until 2017.

The *Hôtel des Postes* is an exceptional example of French Neo-Renaissance architecture in Luxembourg. It combines modern construction technology with traditional stone facing, with stone from Luxembourg quarries used for the visible parts of the building. With its harmonious proportions, the majestic yet unpretentious facade is decorated with sculptural ornaments and figurative elements. Renowned Luxembourg sculptors Pierre Federspiel, Jean Mich, Claus Cito and J.-B. Wercollier were commissioned to design them.

The *Hôtel des Postes* has been a listed building since 2018 and is located in an area protected by UNESCO. The current renovation highlights the artistic and architectural qualities of the building.





**Price of the stamp:**

€1.70

**Layout:**

Reza Kianpour (LU)

**Printing:**

Multicoloured high-resolution offset,  
bpost Stamps Printing, Malines (BE)

**Format of the stamp:**

30 x 40 mm, 10 stamps per sheet

**Print run:**

30,000 stamps



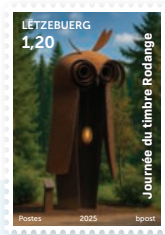
# Industry, art and culture

The *Cercle Philatélique Rodange* celebrates its 80<sup>th</sup> anniversary in 2025. As the host of Stamp Day (*Journée du Timbre*), the club wishes to use the occasion to invite both philatelists and members of the wider public to Rodange – a village of Pétange in the south of Luxembourg – where they will find exhibitions, special philatelic products and much more.

To mark Stamp Day 2025, the organisers have chosen an artwork that stands alongside the sports stadium in Rodange as the motif – one that certainly deserves greater attention.

Since 2020, Rodange has been the site of the imposing “Rail Owl” sculpture by artist Bettina Scholl-Sabbatini. The seven-metre-high owl is made from steel rail sections produced in Rodange. Each of the owl’s “feathers” is made from this material, creating an impressive contrast between art and industry.

The sculpture is a tribute to the local steel industry, which was of major importance to the region’s development for decades. The strength and resistance of the material reflects appreciation for the past and, at the same time, the willingness to face new challenges. A “golden” egg is suspended within the owl’s breast. The egg symbolises new life and growth, while the golden colour evokes special opportunities and good fortune.



## Price of the stamp:

€1.20

## Layout:

Agence Créa POST Luxembourg (LU)

## Printing:

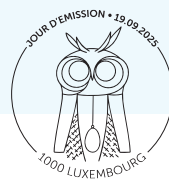
Multicoloured high-resolution offset,  
bpost Stamps Printing, Malines (BE)

## Format of the stamp:

27.66 x 40.20 mm,  
10 stamps per sheet

## Print run:

30,000 stamps





### Stamp Day

In 2018, POST Philately issued a special stamp to mark Stamp Day for the first time. Each host club – to date including Capellen, Differdange, Echternach, Ettelbruck, Steinsel and Tétange – can choose the motif. This motif should have a strong connection to the municipality or region in which the club is located. All stamp enthusiasts can thus look forward to following the development of this series in the coming years.

# Stamp exhibition in honour of HRH Grand Duke Henri



Gabriel de La Bourdonnaye, Markus Hämmerle, Aurélie Genin, Mario Treinen, Isabelle Faber, HRH the Grand Duke, Claude Strasser, Lex Delles, Françoise Schlink, Pierre Zimmer, Gaston Bohnenberger, Antonio Ferreira

To mark the 25<sup>th</sup> anniversary of the accession to the throne of HRH the Grand Duke, the HELIX building hosted the stamp exhibition *Grand-Duc Henri: un règne, une époque. Chronique philatélique d'un jubilé d'argent* from 5 June to 5 July 2025.

The exhibition traced the life of HRH Grand Duke Henri through a philatelic lens, blending tradition with innovation. Visitors were first invited to discover HRH the Grand Duke's journey from childhood to the present day through Luxembourgish stamps issued in his honour. The spotlight then turned to the special philatelic "Deluxe" edition: an embroidered stamp presented in a wooden case, featuring HRH the Grand Duke's small coat of arms and adorned with Austrian crystals.

Through photographs and a detailed video, visitors could learn more about the creation of this exceptional product.

### Grand-ducal visit

HRH Grand Duke Henri also visited the exhibition, accompanied by Lex Delles, Minister for the Economy, SME, Energy and Tourism, as well as members of the Board of Directors and the Executive Committee of POST Luxembourg. During a guided tour led by the team *Patrimoine* and Markus Hämmerle, Director of Hämmerle & Vogel GmbH & Co KG, HRH the Grand Duke gained detailed insights into the design and production of Luxembourgish stamps. On this occasion, a souvenir frame featuring the commemorative stamps was presented to HRH the Grand Duke.



Markus Hämmerle explains the design of the embroidered "Deluxe" commemorative stamp to HRH the Grand Duke



€150

### Deluxe edition of embroidered stamp

POST Philately issued a deluxe version of an embroidered stamp depicting the small coat of arms of HRH the Grand Duke, enriched with Austrian crystals and embroidered with 24-carat gold thread.

**This stamp is available solely in the deluxe edition collector's set. It is a limited edition of 1,000 sets.**

Given the materials used to create the stamp, there will not be a special cancellation mark accompanying this edition.

Discover the manufacturing process of the embroidered "Deluxe" commemorative stamp







## Products & information



€25

### Euro set

Coins and stamps are collector items used to document historical and cultural themes and events. The 2025 euro set includes the stamps of the series "25<sup>th</sup> anniversary of HRH Grand Duke Henri's accession to the throne" and the corresponding Luxembourg UNC euro coin set, the last to be issued during the reign of HRH Grand Duke Henri.



### Changes to the issue programme

The issue of new postocollants (self-adhesive postage stamps in rolls) has been postponed from September to November. The value will be L50g (for mail within Luxembourg in XS format) instead of ATR.

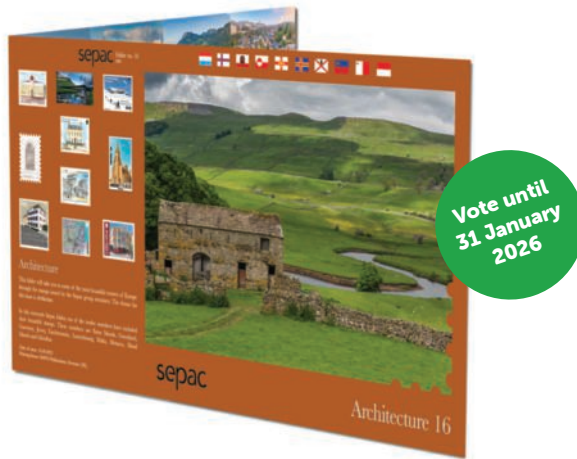
The joint issue with Slovakia has been removed from the programme.

On the occasion of the change of reign on 3 October 2025, POST Philately will issue a block, a commemorative stamp and a special cancellation mark.

# STAMP COMPETITION

## SEPAC 2025

Vote for the most beautiful SEPAC\* 2025 stamp  
and try to win an annual collection from each of the nine  
SEPAC members.



To enter the competition, register on [www.sepacstamps.eu](http://www.sepacstamps.eu)  
and vote for your favourite stamp.

You can also send an email to [info@sepacstamps.eu](mailto:info@sepacstamps.eu),  
with the country of your favourite stamp in the subject line.

### SEPAC 2025 folder €19

As usual, there will again be a joint folder for this year's theme featuring the special edition stamps of SEPAC members: Åland, Faroe Islands, Gibraltar, Greenland, Guernsey, Jersey, Liechtenstein, Malta, Monaco and, of course, Luxembourg.

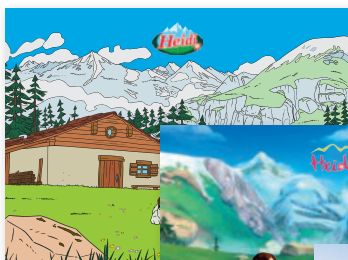
# On the road with POST Philately



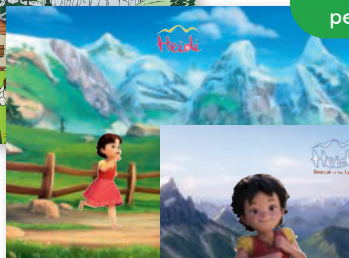
POST Philately's booth for the BERNABA'25

## BERNABA'25

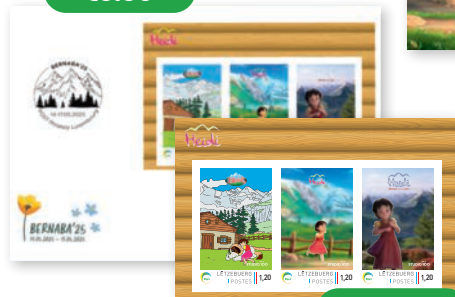
From 14 to 17 May 2025, POST Philately had a booth at the *BERNABA'25 Multilaterale* exhibition in Bern, Switzerland. POST Philately took this opportunity to offer visitors various products: a personalised [meng.post.lu](https://meng.post.lu) block, matching postcards and a special "Heidi" postmark as a small tribute to the main character of Swiss author Johanna Spyri's novels.



€2.10  
per piece



€5.30



€4.80



Discover the special  
[meng.post.lu](https://meng.post.lu) products

Available on the e-shop and  
at the Philatelic Counter

### 31<sup>st</sup> International Comics Festival in Contern

Since 1994, the Comics Festival in Contern has been inviting fans of the genre to meet well-known and emerging comic authors, and to discover collector's items and cult objects from the comic world.

POST Philately has been a welcome guest in Contern for many years and, once again this year, has released special products for the occasion: a new meng.post.lu stamp and the accompanying postcard.

€2.10



€1.60



Discover the special  
[meng.post.lu](https://meng.post.lu) products

Available on the e-shop and  
at the Philatelic Counter

# Stamp presentations

## Stamp presentations of the May issue

On 5 May 2025, POST Philately welcomed to the HELIX building – the headquarters of POST Luxembourg – institutions, organisations and partners that had submitted a theme for one of the stamps issued on 6 May. The guest list included Martine Hansen, Minister of Agriculture, Food and Viticulture, Lydie Polfer, Mayor of Luxembourg City, and representatives of the *Maison du Grand-Duc*, LUGA, Luxembourg Centre for Contemporary and Digital History, uni.lu, *Centre Européen Schengen asbl*, National Library of Luxembourg, Archdiocese of Luxembourg, and INRA.

The presentation of the themes took place in a festive setting. Participants were warmly welcomed by Claude Strasser, Managing director of POST Luxembourg, and Isabelle Faber, *Directrice Ressources humaines, Relations publiques & RSE* at POST Luxembourg. As part of the event, each representative was presented with their souvenir frame.

This was followed by a reception, offering opportunities for discussion and the deepening of existing partnerships in a pleasant setting.



All stamps of the May edition were presented to the respective representatives in the HELIX building on 5 May





Ursula von der Leyen, Roberta Metsola, António Costa, Luc Frieden, Claude Strasser

### Stamp presentation to EU representatives

To celebrate the 75<sup>th</sup> anniversary of the Schuman Declaration, Claude Strasser presented a souvenir frame with the special stamp issued by POST Philately to top European Union officials Roberta Metsola (President of the European Parliament), António Costa (President of the European Council) and Ursula von der Leyen (President of the European Commission), as well as to Luxembourg's Prime Minister, Luc Frieden, on 9 May 2025. The presentation was held in the birthplace of Robert Schuman in Clausen (Luxembourg City). On this occasion, Claude Strasser, emphasised the role of philately as the guardian of historical memory and a symbol of European unity.

After the official ceremony, the wider public were invited to discover the exhibition *Hommage philatélique à Robert Schuman* – which depicts the political career of one of the founding fathers of the European Union on Luxembourg stamps.



Lynn Stoffel, Nena Sand, Lisa Lonsdorfer, Isabelle Faber, Jean-Paul Zeimes, René Ernst, Romain Kill, Peggy Olinger, Johanna Steffestun, David Weis

### Presentation of EUROPA stamps – National archaeological discoveries

As part of the special edition of the EUROPA series of 6 May 2025, POST Philately issued two stamps dedicated to national archaeological discoveries. They depict the Gallo-Roman theatre of Dalheim/*Ricciacum*, and the Roman *villa* in Schieren.

On 23 May 2025, Isabelle Faber was invited to Dalheim and presented souvenir frames to Romain Kill, Mayor of Dalheim, and Jean-Paul Zeimes, Mayor of Schieren, in the presence of representatives of the *Institut National de Recherches Archéologiques* (INRA) and the College of Aldermen of Dalheim.

# Behind the scenes

**In the last two editions we looked at how the themes for POST Philately's annual programme are chosen, how the creative process and discussions between all participants are carried out, and the subsequent printing, production and finishing procedures. Delivery, quality control and distribution are the next steps.**

## Arrival and quality control

Motifs are normally delivered separately, partly because they are delivered from different print shops, and partly because the various formats and finishing procedures require different production times. Freshly printed stamps arrive at the national sorting centre (*Centre de tri*) in Bettembourg, where they are received by the warehouse manager. Sample quality control measures are then carried out to ensure that the status of all sheets is the same, reproduction of the colours is identical throughout, and there is no misalignment in the cutting. Philatelists are particularly attentive to ensuring perfect execution, and so it is important to check all details.

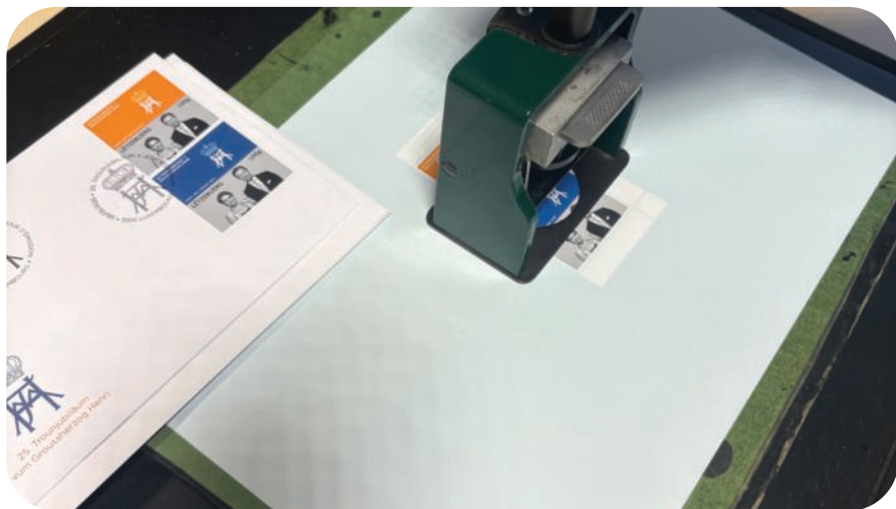


Tests are made on a sample basis to ensure that reproduction of the colours is identical



Stamps are stored in sheets in a secure warehouse

Once all stamps in a delivery batch have been checked and sorted, they are moved to the warehouse for storage. As they are items of value, the warehouse is secure and access is restricted to just a few people.



The staff members cancel the stamps according to the customers' wishes, always adhering to the predetermined regulations

### **Distribution and dispatch**

How do the stamps of a new issue reach customers? There are three main distribution channels.

Initially, predefined volumes of new motifs are securely delivered to all post offices in the country and to the Philatelic Counter at the Espace POST Luxembourg-Gare.

The POST Philately e-shop is updated at the same time, so that all new motifs are also available here and can be ordered online.

The third method of distribution, is the most laborious: the subscriptions. A list details the format in which customers wish to receive their stamps. There are many possibilities: as a first-day cover with a cancellation mark, unfranked stamps in a sheet, partial sheets, or as individual stamps with a cancellation mark (with various possibilities for the position of the postmark). The cancellation mark may be the special postmark for the issue or the day's regular postmark.

This list explains why each individual order must be compiled manually and with the utmost care. The slightest crease, a smudged cancellation mark or an imperfectly stuck stamp means that the product cannot be used. Special finishes such as embroidered stamps add an additional level of difficulty for employees.

In addition to these three logistics channels, there are also philatelists who send their mail with the new stamps to POST Philately to be cancelled and then returned. There are clear rules on what can be postmarked and how: if there is already a cancellation mark, a second postmark cannot be added; the special cancellation mark for the first day of issue can only be used for stamps in the relevant issue; only a single date can be cancelled on an individual envelope; etc.

## Individual orders

All current philatelic products are available in the e-shop throughout the year. Individual orders are generally processed on the same day. POST Philately employees are aware of the high – and often very specific – expectations of their customers and apply the utmost attention and professional competence to every order.



The stamps are checked and carefully wrapped for shipping, regardless of whether it is a subscription or a single order





A first-day-of-issue cancellation mark will be available  
on **18 September (crypto stamp)** and **19 September 2025**  
at the Philatelic Counter in Luxembourg-Gare.

**NEW**

## OPENING HOURS OF THE PHILATELIC COUNTER

Monday to Friday  
8.30 am – 12.00 pm

### POST Philately

L-2992 Luxembourg

### Philatelic Counter

Espace POST Luxembourg-Gare  
38, place de la Gare  
L-1616 Luxembourg-Gare

Tel.: 4088-8840

E-mail: [contact.philately@post.lu](mailto:contact.philately@post.lu)



Prices include Luxembourg VAT. Depending on the delivery address, the VAT may vary.

Postage stamps with a face value in euros and those with no face value will remain valid until stated otherwise. Once sold, postage stamps will be neither taken back nor exchanged.

Conditions accessible on [www.post.lu](http://www.post.lu) or in any POST Point of sale.

The pictures of the postage stamps shown in Philatélux are non-contractual.

For easier reading, we use generic masculine formulations in Philatélux.  
Pictures: © POST Luxembourg 2025 (unless otherwise specified)

Visit our e-shop:

**postphilately.lu**



PRINTED IN  
LUXEMBOURG

